

## Vezzel

Contact us for fast and professional help,  
requests for quotations, documentation and orders.

**Office**  
Rosendalagatan 4  
561 34 Huskvarna  
Sweden

**Phone**  
+46 70-247 97 07

**E-mail**  
info@vezzel.se

**Website**  
vezzel.se



# FLX 125

Vezzel



## FLX 125



### FLX 125

FLX 125 is a strong divisible duct that withstands a pressure of up to **20.000 N**. FLX 125 has been tested and approved by SP (the Technical Research Institute of Sweden) and is used where a simple and secure cable duct is required.

### Divisible and flexible

FLX divisibility is enabled by two identical halves, which are opened manually as the male/female coupling is integrated in the channels. The FLX system has built-in sleeve connections, making them flexible with up to 12 degrees of articulation in all directions.

### Cost-effectiveness

With FLX channels, you can easily and conveniently lay multiple cables in the same channel and install or switch to a more cost-effective solution than traditional cable laying.

### Assembly

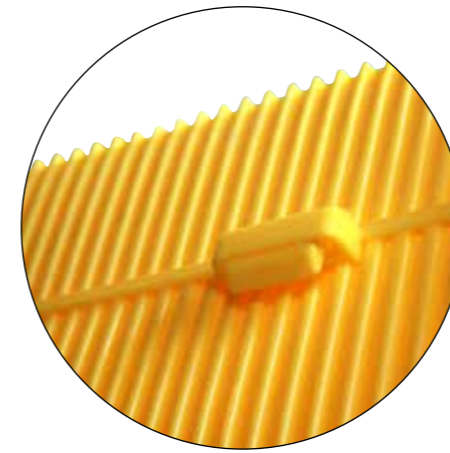
During assembly, each channel is positioned with some overlap, which locks the channels together and prevents them from coming apart.

### Dimensions

FLX is 1 metre long – the person carrying out the installation determines the length of the installation. FLX 125 has an internal measurement of 98 x 98 mm, which enables installation of, for example, one three-core cable with an exterior diameter of 89 mm.

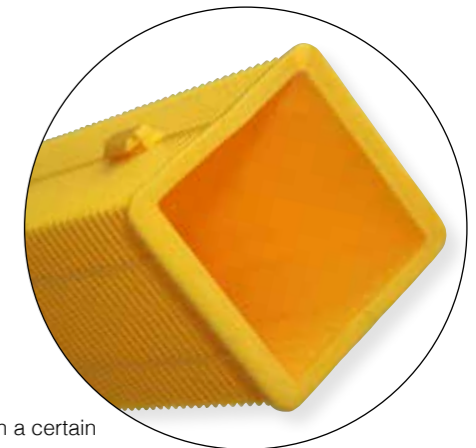
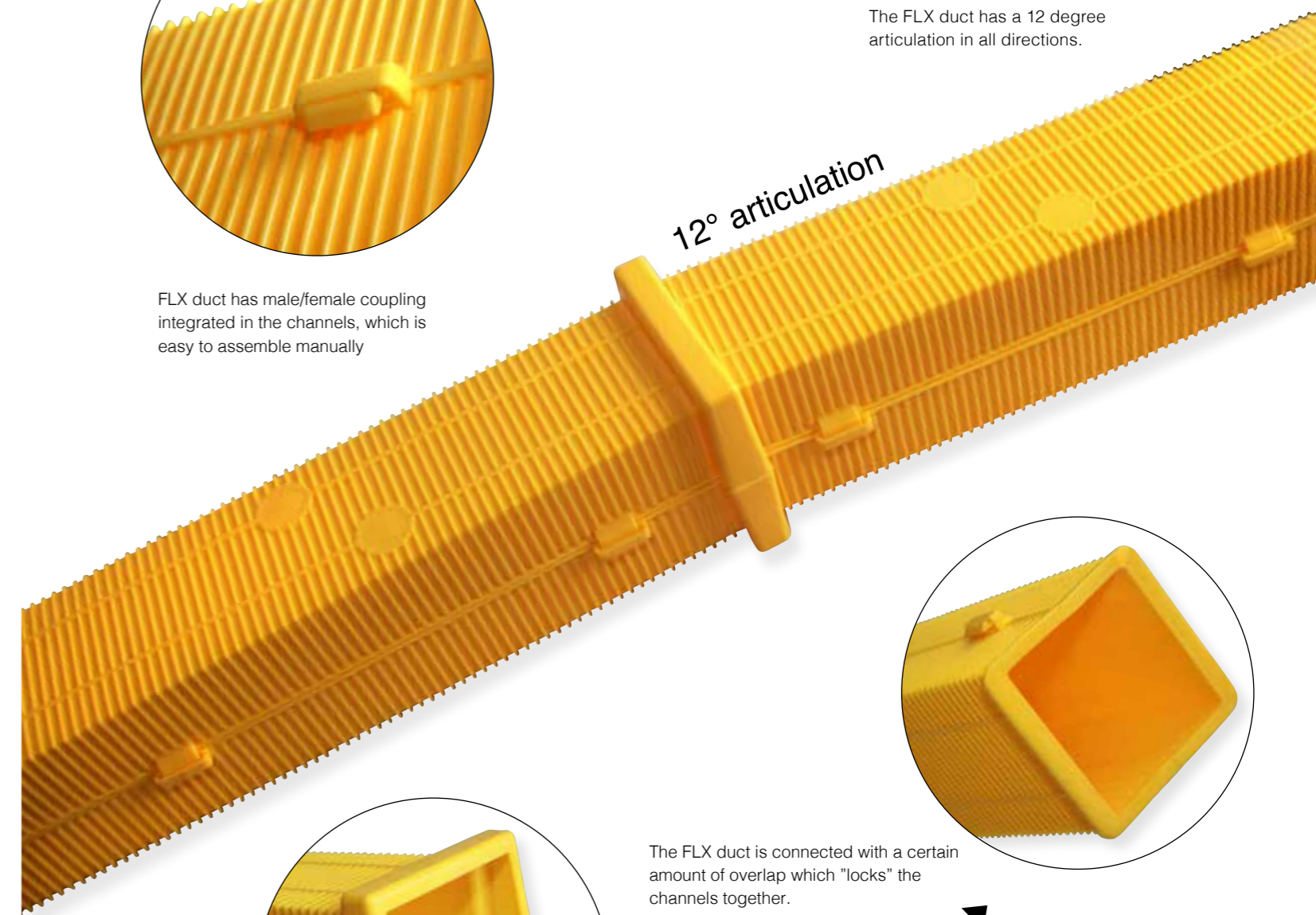
### FLX 125 and Vezzel AB

FLX 125 is a patented product that was developed in conjunction with contractors to meet market needs.



FLX duct has male/female coupling integrated in the channels, which is easy to assemble manually

The FLX duct has a 12 degree articulation in all directions.



The FLX duct is connected with a certain amount of overlap which "locks" the channels together.

